



www.skyjacker.com

REQUIRED TOOL LIST:

- Safety Glasses
- Metric / Standard Wrenches & Sockets
- Measuring Tape
- Torque Wrench



**Jeep Gladiator JT
Adjustable Rear Track Bar
Installation Instructions**

Before beginning the installation, thoroughly & completely read these instructions & the enclosed driver's WARNING NOTICE. Affix the WARNING decal in the passenger compartment in clear view of all occupants. Please refer to the Parts List to insure that all parts & hardware are received prior to the disassembly of the vehicle. If any parts are found to be missing, contact SKYJACKER® Customer Service at 318-388-0816 to obtain the needed items. If you have any questions or reservations about installing this product, call SKYJACKER® Technical Assistance at 318-388-0816.

Component Box Breakdown:

Part #: JTGRTBA20

Item #	Description	Qty	Item #	Description	Qty
JTGRTBA20-B	JT REAR ADJUST TRACK BAR	1	34RFTJN	3/4 RIGHT HAND JAM NUT	1
RR34X14RB	3/4 ROD END W/14MM BUSHING	1	I-JTGRTBA20	INST SHEET: JTGRTBA20	1

Installation:

1. With the vehicle on flat level ground, set the emergency brake, & block the front & rear tires / wheels.
2. Disconnect the OEM rear track bar from the rear differential using a 21mm socket / wrench.
Note: If needed, attach a ratchet strap between the frame & the rear differential to take the load off of the lower OEM track bar bolt.
3. Disconnect the OEM rear track bar from the frame using a 21mm socket / wrench.
4. Remove the OEM rear track bar & install the fixed end of the new Skyjacker adjustable rear track bar to the rear differential using the OEM hardware & a 21mm socket / wrench. **Do not tighten at this time.** (See Photo # 1)

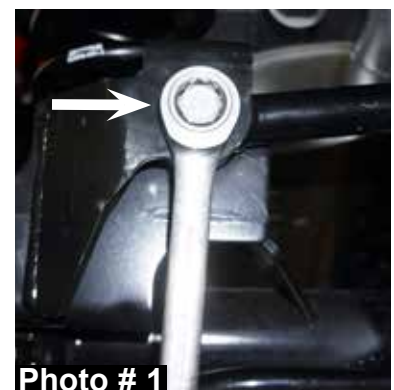


Photo # 1

5. Using a measuring tape, check the rear of the vehicle to make sure the body is centered over the rear tires / wheels & adjust the new Skyjacker rod end to align with the upper track bar mounting location.
6. Install the adjustable end of the new Skyjacker adjustable rear track bar to the frame using the OEM hardware & a 21mm socket / wrench. **Do not tighten at this time.** (See Photo # 2)
7. Tighten the upper & lower rear track bar mounting hardware to the OEM specifications using a 21mm socket / wrench.
8. Tighten the supplied jam nut of the new Skyjacker adjustable rear track bar using a 1 1/8" wrench. (See Photo # 3)

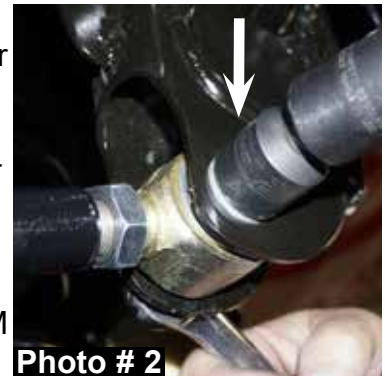


Photo # 2

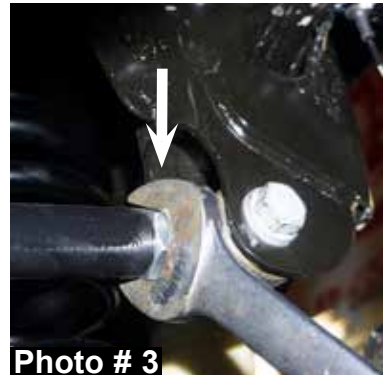


Photo # 3

Final Notes:

- After the installation is complete, double check that all nuts & bolts are tight. Refer to the following chart below for the proper torque specifications.
- With the vehicle placed on the ground, cycle the steering lock to lock & inspect the steering, suspension, brake lines, front & rear drivelines, fuel lines, & wiring harnesses for proper operation, tightness, & adequate clearance.
- After the first 100 miles, check all of the hardware for the proper torque & periodically thereafter.

<u>TORQUE SPECIFICATIONS</u>					
<u>INCH SYSTEM</u>			<u>METRIC SYSTEM</u>		
Bolt Size	Grade 5	Grade 8	Bolt Size	Class 8.8	Class 10.9
5/16	15 FT LB	20 FT LB	6MM	5 FT LB	9 FT LB
3/8	30 FT LB	35 FT LB	8MM	18 FT LB	23 FT LB
7/16	45 FT LB	60 FT LB	10MM	32 FT LB	45 FT LB
1/2	65 FT LB	90 FT LB	12MM	55 FT LB	75 FT LB
9/16	95 FT LB	130 FTLB	14MM	85 FT LB	120 FT LB
5/8	135 FT LB	175 FT LB	16MM	130 FT LB	165 FT LB
3/4	185 FT LB	280 FT LB	18MM	170 FT LB	240 FT LB

- The above specifications are not to be used when the bolt is being installed with a bushing.

Seat Belts Save Lives, Please Wear Your Seat Belt.