



**Installation manual
Dual In-line Steering Stabilizer
2007 - 2010
Jeep JK
Part # 66490**

sj06022010rev.01

**Part # 66490
2007 - 2010 Jeep JK
Dual In-line steering stabilizer**

<u>Part #</u>	<u>Description</u>	<u>Qty.</u>
66490-01	Center stabilizer bracket	1
66490-02	DS & PS out stabilizer	2
81185	Stabilizer	2
66490NB	Hardware bag	1
SX5000	Stabilizer stickers	2
66490INST	Instruction manual	1

Congratulations on your selection to purchase a Tuff Country EZ-Ride Suspension System. We at Tuff Country EZ-Ride Suspension are proud to offer a high quality product at the industries most competitive pricing. Thank you for your confidence in us and our product.

If you desire to return your vehicle to stock, it is the customers responsibility to save all stock hardware.

Please see the end of the installation manual for a picture of the hard parts that are included in this suspension system.

After the original installation, Tuff Country EZ-Ride Suspension also recommends having the alignment checked every 6 months to ensure proper tracking, proper wear on tires and front end components. Tuff Country EZ-Ride Suspension takes no responsibility for abuse, improper installation or improper suspension maintenance.

Important customer information:

Tuff Country EZ-Ride Suspension highly recommends that a qualified or a certified mechanic performs this installation.

It is the responsibility of the customer/installer to wear safety glasses at all times when performing this installation.

It is the customers/installers responsibility to read and understand all steps before installation begins. If you have any questions or concerns, please contact our technical department @ (801) 280-2777. Also, the OEM manual should be used as a reference guide.

This vehicles reaction and handling characteristics may differ from standard cars and/or trucks. Modifications to improve and/or enhance off road performance may raise the intended center of gravity. Extreme caution must be utilized when encountering driving conditions which may cause vehicle imbalance or loss of control. DRIVE SAFELY! Avoid abrupt maneuvers: such as sudden sharp turns which could cause a roll over, resulting in serious injury or death.

It is the customers responsibility to make sure that a re-torque is performed on all hardware associated with this suspension system after the first 100 miles of installation. It is also the customers responsibility to do a complete re-torque after every 3000 miles or after every off road use.

Limited lifetime warranty

Notice to all Tuff Country EZ-Ride Suspension customers: It is your responsibility to keep your original sales receipt! If failure should occur on any Tuff Country EZ-Ride Suspension component, your original sales receipt must accompany the warranted unit to receive warranty. Warranty will be void if the customer can not provide the original sales receipt. Do not install a body lift in conjunction with a suspension system. If a body lift is used in conjunction with any Tuff Country EZ-Ride Suspension product, your Tuff Country EZ-Ride Suspension WARRANTY WILL BE VOID. Tuff Country Inc. ("Tuff Country") suspension products are warranted to be free from defects in material and workmanship for life if purchased, installed and maintained on a non-commercial vehicle; otherwise, for a period of twelve (12) months, from the date of purchase and installation on a commercial vehicle, or twelve thousand (12,000) miles (which ever occurs first). Tuff Country does not warrant or make any representations concerning Tuff Country Products when not installed and used strictly in accordance with the manufacturer's instructions for such installation and operation and accordance with good installation and maintenance practices of the automotive industry. This warranty does not apply to the cosmetic finish of Tuff Country products nor to Tuff Country products which have been altered, improperly installed, maintained, used or repaired, or damaged by accident, negligence, misuse or racing. ("Racing is used in its broadest sense, and, for example, without regards to formalities in relation to prizes, competition, etc.) This warranty is void if the product is removed from the original vehicle and re-installed on that or any other vehicle. This warranty is exclusive and is in lieu of any implied warranty of merchantability, fitness for a particular purpose or other warranty of quality, whether express or implied, except the warranty of title. All implied warranties are limited to the duration of this warranty. The remedies set forth in this warranty are exclusive. This warranty excludes all labor charges or other incidental of consequential damages. Any part or product returned for warranty claim must be returned through the dealer of the distributor from whom it was purchased. Tuff Country reserves the right to examine all parts returned to it for warranty claim to determine whether or not any such part has failed because of defect in material or workmanship. The obligation of Tuff Country under this warranty shall be limited to repairing, replacing or crediting, at its option, any part or product found to be so defective. Regardless of whether any part is repaired, replaced or credited under this warranty, shipping and/or transportation charges on the return of such product must be prepaid by the customer under this warranty.

Important information that needs to be read before installation begins:

The dual stabilizer will only fit on vehicles that have at least a 4" Suspension System installed on it. If the vehicle that you are working on does not have at least a 4" Suspension System, please contact the company you purchased it from to return this kit.

This kit does not come with dust boot covers. If you have not already ordered your dust boot covers, please contact the company that you purchased the kit from and order dust boot covers. If dust boot covers are not used damage may occur to your cylinders and your warranty will be void.

Before installation begins, Tuff Country EZ-Ride Suspension highly recommends that the installer performs a test drive on the vehicle. During the test drive, check to see if there are any uncommon sounds or vibrations. If uncommon sounds or vibrations occur on the test drive, uncommon sounds or vibrations will be enhanced once the suspension system has been installed. Tuff Country EZ-Ride Suspension highly recommends notifying the customer prior to installation to inform the customer of these issues if they exist.

Make sure to use thread locker or loctite on all new and stock hardware associated with the installation of this suspension system.

Special note: Before installation begins, it is the customers/installers responsibility to make sure that all parts are on hand. If any parts are missing, please feel free to call one of our customer service representatives @ (801) 280-2777.

Hardware bag 66490NB includes:

<u>Description</u>	<u>Quantity</u>
5U-5161122316R (5/16" x 1 1/2" x 2 3/16" round u-bolt)	4
5U-12234412R (1/2" x 2 3/4" x 4 1/2" round u-bolt)	2
12HN (1/2" u-bolt high nut)	4
SUW-12 (1/2" harden u-bolt washer)	4
516FLN (5/16" flange lock nut)	8
S10121 (universal stabilizer bolt)	2
PB8016 (poly bushing)	4
S10049 (washer)	4
38FN (3/8" fine nut)	2

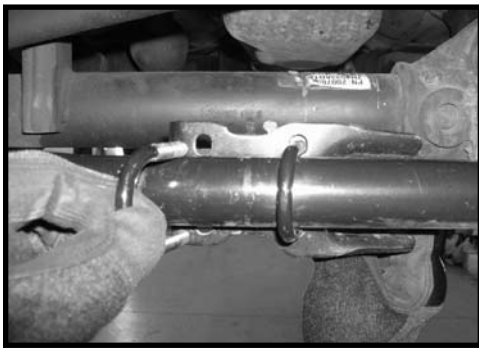
Recommended tools selection:

Torque wrench
Standard socket set
Standard wrench set
Metric socket set
Metric wrench set
Tape measure

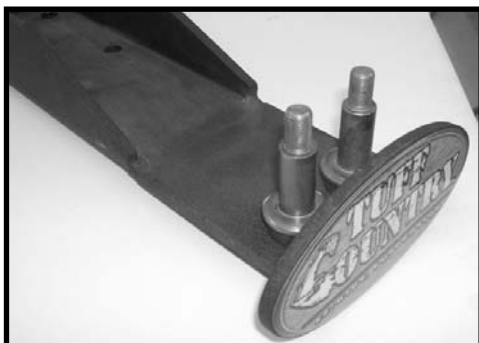
Please follow instructions carefully for dual stabilizer installation:

1. To begin installation, block the rear tires of the vehicle so that the vehicle is stable and can't roll backwards. Safely lift the front of the vehicle and support the vehicle with a pair of jack stands. Place a jack stand on both the driver and the passenger side.

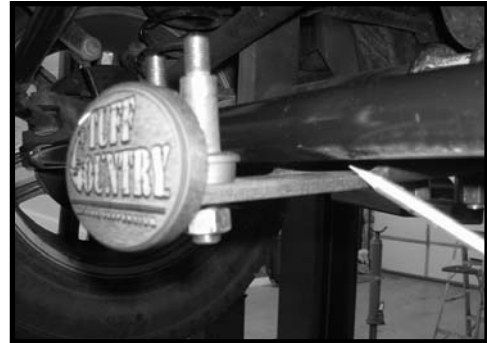
2. Remove the stock stabilizer from the stock location and discard the stabilizer and hardware. Now remove the stock center bracket from the tie rod. The stock hardware and bracket may be discarded.



3. Locate (2) S10121 universal stabilizer bolts from hardware bag 66490NB. Also, locate the new center stabilizer bracket. Install the new universal stabilizer bolts to the new bracket. Save the other hardware for later installation.



4. Locate (2) 1/2" x 2 3/4" x 4 1/2" round u-bolts, (4) 1/2" u-bolt high nuts and (4) 1/2" harden u-bolt washers from hardware bag 66490NB. Install the new center stabilizer bracket to the front axle and secure using the new u-bolts and hardware. **Special note: Make sure to slide the new center bracket all the way over to the driver side until it is flush with the front differential. The new bracket will go under the front axle and also, make sure that you have about 1/2" of clearance between the tie rod and the new bracket. Torque the new u-bolts to 50 ft lbs.**

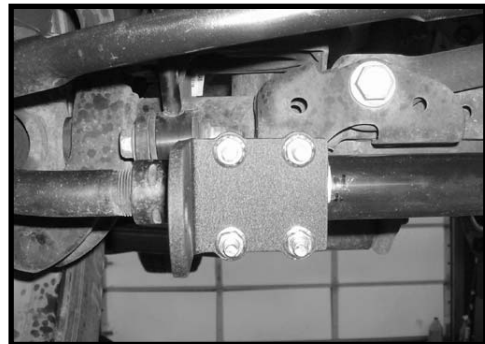
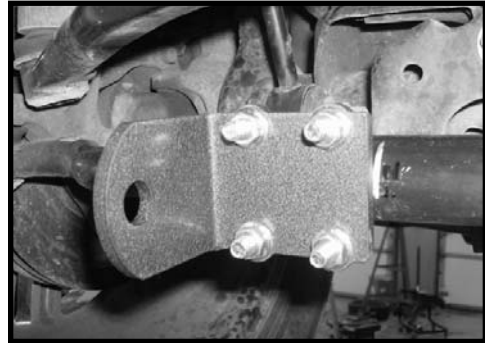
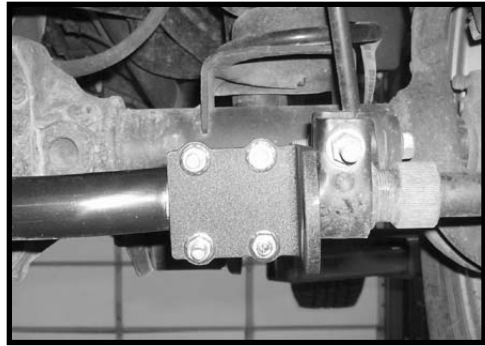
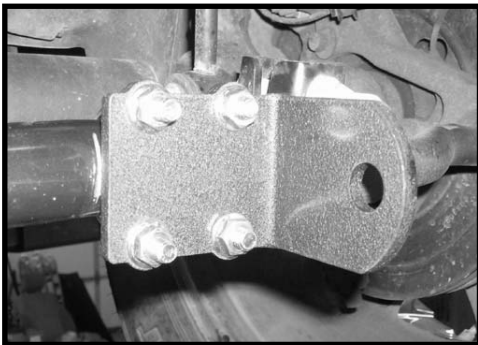
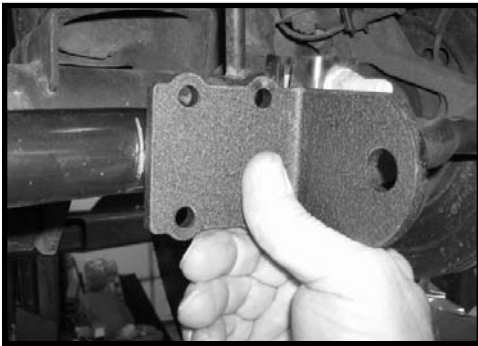


5. Make sure that the front wheels are pointing straight forward. Measure from the leading edge on the new center bracket to the passenger side, scribe a mark at 15 1/2". Repeat procedure on the driver side.

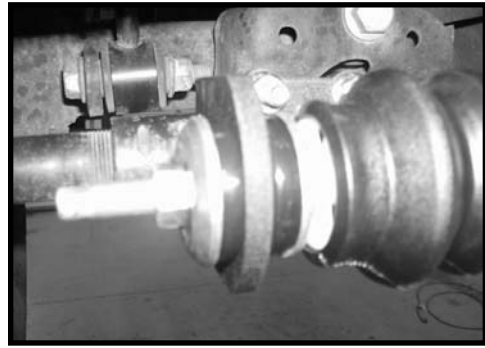




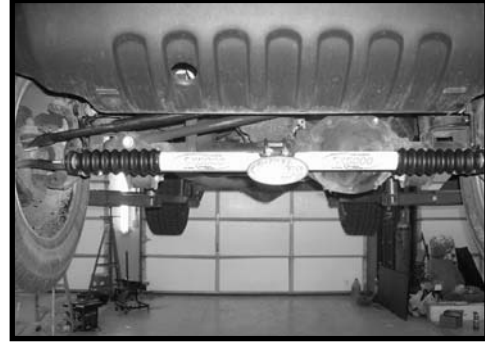
6. Locate the new driver and passenger outer stabilizer bracket. Also, locate (4) 5/16" x 1 1/2" x 2 3/16" round u-bolts and (8) 5/16" flange nuts from hardware bag 66490NB. Working on the driver side and using the line that was scribed earlier in the installation as a reference mark, install the new driver side outer bracket to the stock tie rod and secure using the new u-bolts and hardware. Make sure to use thread locker or loctite and torque to **14 ft lbs.** Repeat procedure on the passenger side.



7. Locate the new cylinders. Locate the (4) stabilizer stem bushings, (4) stem washers and (2) 3/8" nuts from hardware bag 66490NB. Also, at this time locate the balance of the hardware out of the universal stabilizer bolts. Install the new cylinders to the center bracket using the new hardware. Make sure to use thread locker or loctite and torque to **22 ft lbs.** Then install each cylinder to the previously installed outer brackets using the new hardware. Make sure to use thread locker or loctite and torque to **12 ft lbs.** **Special note: This kit does not come with dust boot covers. If you have not already ordered your dust boot covers, please contact the company that you purchased the kit from and order dust boot covers. If dust boot covers are not used damage may occur to your cylinders and your warranty will be void.**



8. Locate the new cylinder stickers and install them on each one of the cylinders.



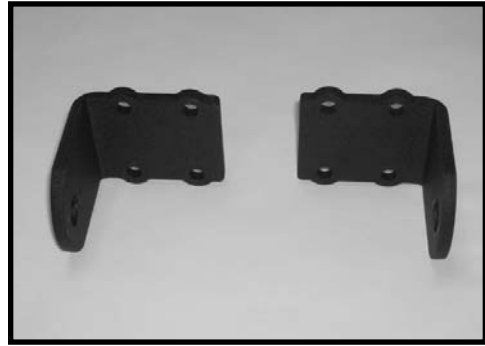
9. Carefully lower the vehicle to the ground. Installation complete. If you have any questions, please feel free to contact Tuff Country @ 801 280 2777.

Tuff Country EZ-Ride Suspension recommends that a complete re-torque is done on all bolts associated with this suspension system. It is the customers responsibility to make sure that a re-torque is performed on all hardware associated with this suspension system after the first 100 miles of installation. It is also the customers responsibility to do a complete re-torque after every 3000 miles or after every off road use. Neglect of following these steps could cause brackets to come loose and cause serious damage to the suspension system and to the vehicle.

If you have any questions or concerns, please feel free to contact Tuff Country or your local Tuff Country dealer.



**66490-01 / Qty. (1)
Center stabilizer bracket**



**66490-02 / Qty. (2)
DS & PS outer bracket**