

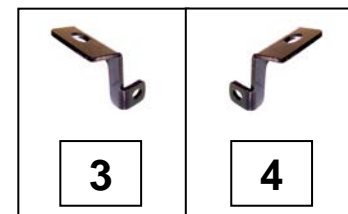
# Installation Instructions

## O.E. Xtreme Brackets Part # 6849025

### 2011-2013 Kia Sorento (except SX)

### Parts List

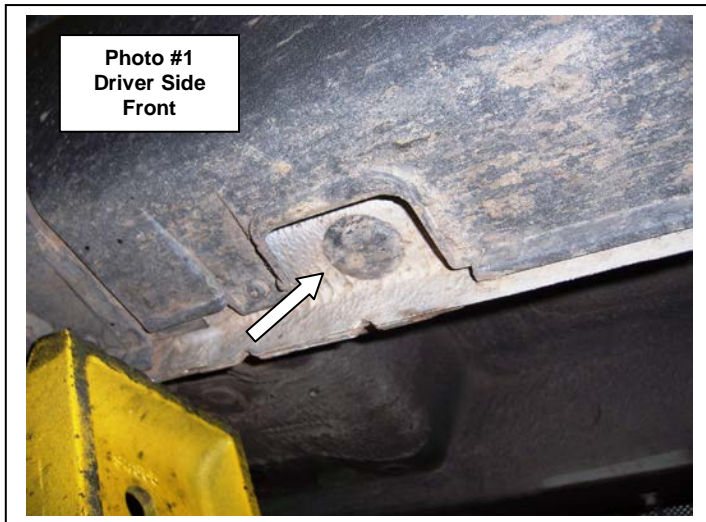
Item	Qty	Part #	Description	Torque
1	2	390900AA	Driver & Passenger Front Bracket	-
2	2	390900BA	Driver & Passenger Rear bracket	-
3	2	390904BA	Driver Front & Passenger Rear Auxiliary Bracket	-
4	2	390904BA	Passenger Front & Driver Rear Auxiliary Bracket	-
5	2	370200AA	3/8" T-Bolt	-
6	2	370201AA	Spacer Plate	-
7	2	ASH-E37	Vinyl Gasket	-
8	4	390900CA	5/16" T-Bolt	-
9	8	AST-T479	5/16" Square Head Bolt	11Ft. Lbs.
10	4	AST-T139	5/16" x 1" Hex Bolt	11Ft. Lbs.
11	12	AST-RPR11	5/16" Lock Washer	-
12	12	AST-RP16	5/16" Flat Washer	-
13	2	AST-RP03	3/8" Flat Washer	-
14	2	AST-RPR03	3/8" Lock Washer	-
15	2	AST-TU06	3/8" Hex Nut	30 Ft. Lbs.
16	4	AST-RP04	5/16" Flat Washer galvanized	-
17	4	AST-RPR04	5/16" Pressure washer galvanized	-
18	4	AST-TU08	5/16" Hex. Nut galvanized	-
19	4	AST-TU47	5/16" Hex Nut	-



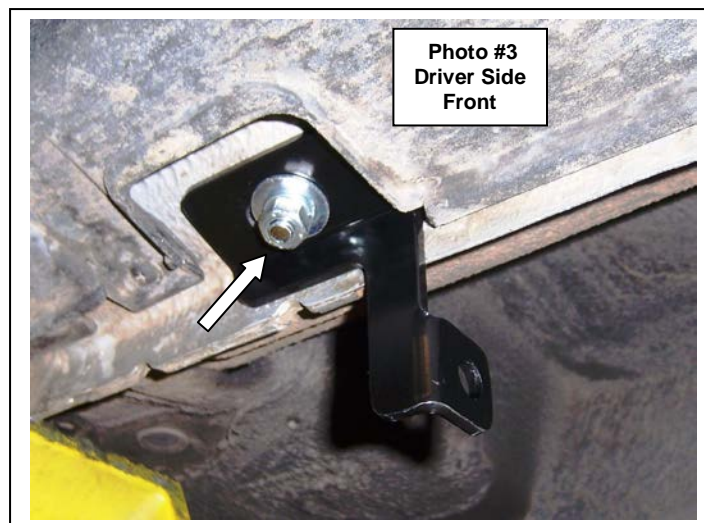
Read the installation instructions completely and verify that all of the parts listed are accounted for. If you have defective, missing or damaged parts or need assistance, please contact *Go Rhino Products* for fast, friendly customer service at: 1-888-427-4466 or email: [warranty@gorhino.com](mailto:warranty@gorhino.com)

## Installation

**Step-1** Begin the installation with the driver side of the vehicle. Locate the plastic plug in the rocker panel at the front of the vehicle. Remove the plastic plug and install (1) 5/16" t-bolt in the rocker panel, (**Photo #1 & #2**).



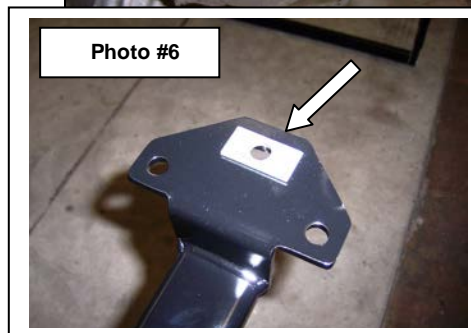
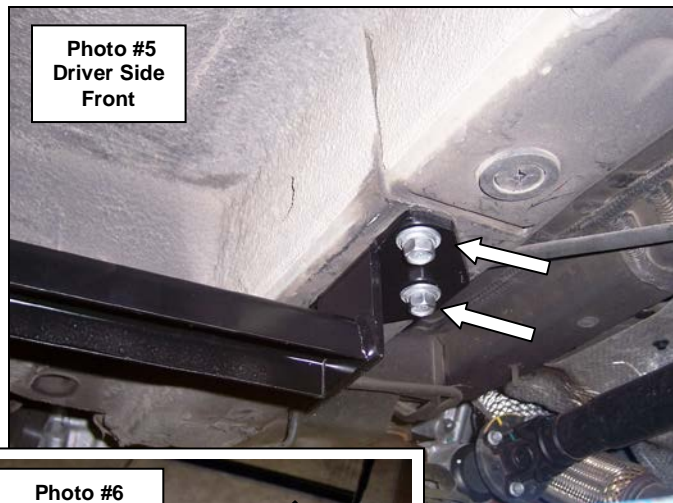
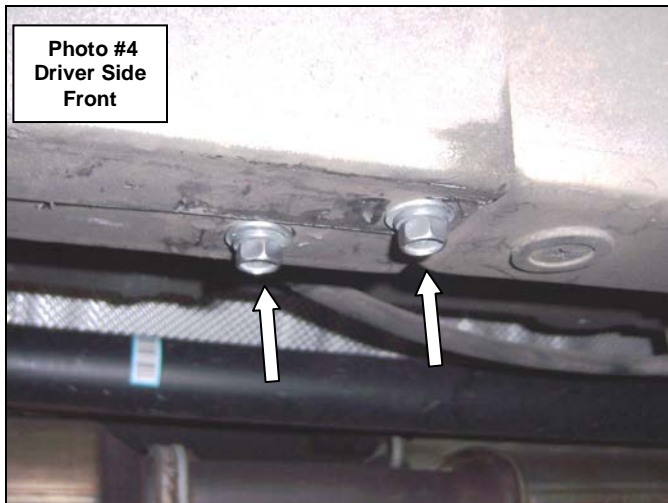
**Step-2** Attach the driver side front auxiliary bracket to the rocker panel using the 5/16" t-bolt, (1) 5/16" flat washer, (1) 5/16" lock washer and (1) 5/16" hex nut, (**Photo #3**). Leave the hex nut loose for final adjustment.



**Step-3** Remove the (2)10mm factory hex bolts located on the bottom of the frame, (**Photo #4**).

**Step-4** Attach one of the front brackets to the bottom of the frame using the factory bolts, (**Photo #5**). Leave the bolts loose for final adjustment.

**Note:** Position (1) supplied spacer as shown over the obround hole in the front bracket, and install between the bracket and frame, (**Photo #6**).



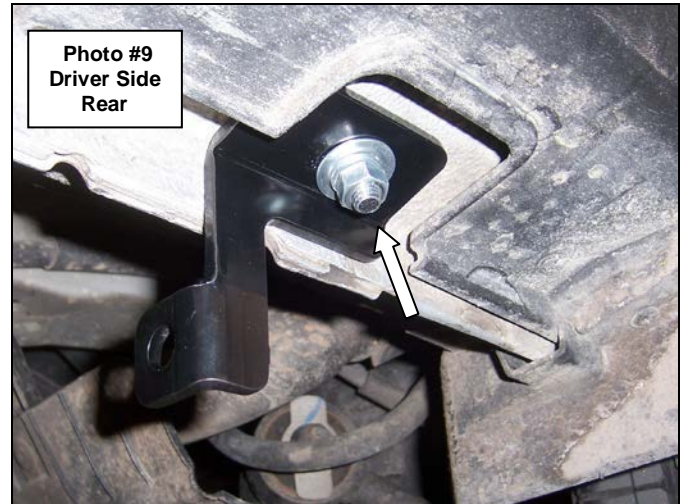
**Step-5** Attach the opposite end of the front bracket to the auxiliary bracket using (1) 5/16" x 1" hex bolt, (1) 5/16" flat washer, (1) 5/16" lock washer and (1) 5/16" hex nut, (**Photo #7**). Leave the hex nut and bolt loose for final adjustment.



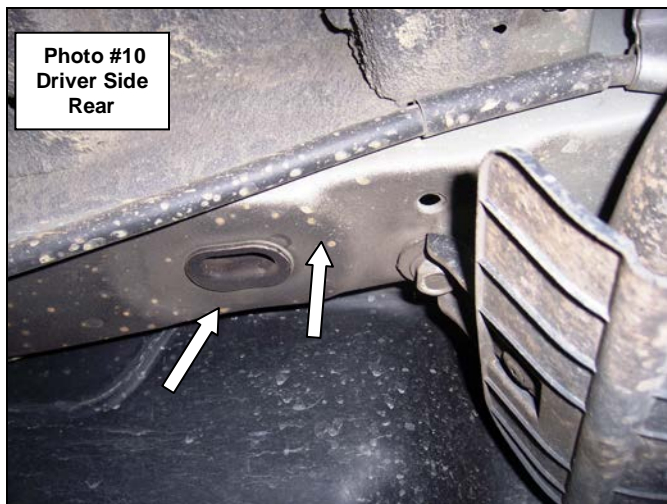


**Step-6** Locate the plastic plug in the rocker panel at the rear of the vehicle, (**Photo #8**). Remove the plastic plug and install (1) 5/16" t-bolt in the rocker panel.

**Step-7** Attach the driver side rear auxiliary bracket to the rocker panel using the 5/16" t-bolt, (1) 5/16" flat washer, (1) 5/16" lock washer and (1) 5/16" hex nut, (**Photo #9**). Leave the hex nut loose for final adjustment.



**Step-8** Locate the plastic plug in the frame at the rear of the vehicle, (**Photo #10**). Remove the plastic plug and install (1) 3/8" t-bolt in the rocker panel, and install (1) vinyl gasket over the threads to prevent the t-bolt from falling into the frame, (**Photo #11**).



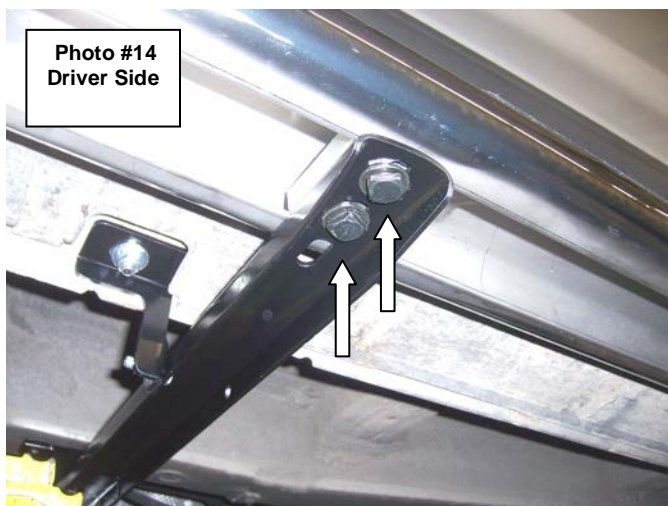
**Step-9** Attach one of the rear brackets to the bottom of the frame using the 3/8" t-bolt, (1) 3/8" flat washer, (1) 3/8" lock washer and (1) 3/8" hex nut, (**Photo #12**). Leave the hex nut loose for final adjustment.

**Step-10** Attach the opposite end of the rear bracket to the auxiliary bracket using (1) 5/16" x 1" hex bolt, (1) 5/16" flat washer, (1) 5/16" lock washer and (1) 5/16" hex nut, (**Photo #7**). Leave the hex nut and bolt loose for final adjustment.



**Step-11** Set the driver side, side bar on top of the brackets and align the side bar with the vehicle. Position the clamp brackets inside the opening of the side bar and align the clamp bracket threads with the slot holes in the brackets. Attach the side bar to each of the brackets using the clamp bracket, (2) 5/16" x 1" square head bolts, (2) 5/16" lock washers and (2) 5/16" flat washers, (**Photo #14**). Leave the square head bolts loose for final adjustment.

**Step12** Re-align the side bar with the vehicle and tighten all side bar, bracket and vehicle nuts and bolts.



**Step-13** Repeat the above installation steps to install the passenger side brackets and side bar.

**Remember to periodically check and retighten all nuts and bolts.**