

HUSKY **WeatherBEATER™** **Custom Vehicle Floor Protection**

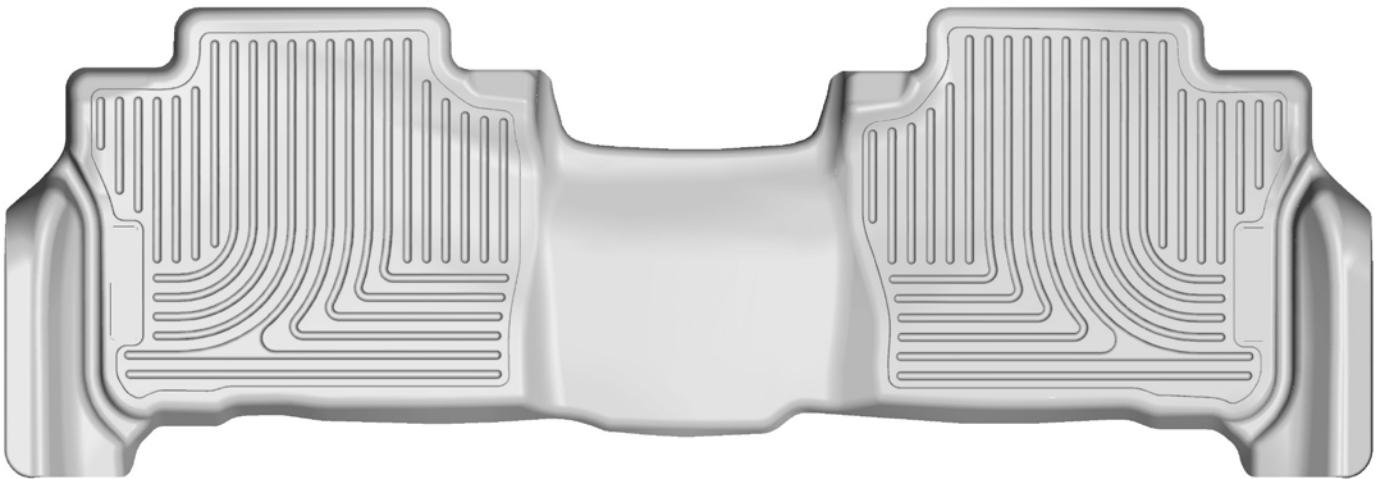
CARE AND USE INSTRUCTIONS

Thank you for selecting a WeatherBeater® Floor Liner from Winfield Consumer Products. Your new second seat floor liner is custom molded to fit your Toyota Land Cruiser / Lexus LX570. The liner is made to take the place of your factory floor mats. **For correct fit, it is necessary to remove the factory floor mats before installing your new floor liners.** However, do not remove the factory-installed carpeting.

Your liner is made from an engineering resin that is lightweight and extremely tough and durable. The easiest way to clean your liner is with a damp cloth or sponge. If using a cleaner, 409® or Glass Plus® work well. Use of Armor All®, Son-of-a-Gun® or similar items is discouraged as these products make the liner slick.

INSTALLATION INSTRUCTIONS FOR YOUR TOYOTA LAND CRUISER & LEXUS LX 570 SECOND SEAT FLOOR LINER

FRONT OF VEHICLE



TO EASE INSTALLATION OF YOUR SECOND SEAT FLOOR LINER, FIRST MOVE THE FRONT ROW SEATS COMPLETELY FORWARD TO ALLOW EASIER ACCESS TO THE REAR FLOOR PANS. ONCE YOU HAVE INSTALLED THE LINER, REPOSITION THE FRONT SEATS AS DESIRED.